



UNC Greensboro Millennial Campus District Planning

October 18, 2018



UNC
GREENSBORO

HR&A
Analyze. Advise. Act.

AGENDA

- 1 Opening Remarks from Chancellor Gilliam**
- 2 Overview of Innovation Districts**
- 3 Significance of the Millennial Campus Designation**
- 4 UNCG's Vision for the Millennial Campus**
- 5 Table Discussions**

An aerial photograph of a university campus, overlaid with a semi-transparent blue filter. The image shows several large, multi-story brick buildings with white window frames, interspersed with green trees. In the background, a tall brick smokestack is visible on the left, and various other campus buildings and structures extend towards the horizon under a clear sky. The overall scene depicts a well-developed academic environment.

Overview of Innovation Districts

R&D IS NOW INCREASINGLY OCCURRING IN MIXED-USE, WALKABLE, AND TRANSIT-RICH INNOVATION DISTRICTS.



THEN: 20th Century Research Campus



NOW: 21st Century Innovation District



CONVERGENCE OF PEOPLE, PLACE, & PROGRAMS



THERE ARE FOUR KEY CHARACTERISTICS OF SUCCESSFUL INNOVATION DISTRICTS.



An aerial photograph of a university campus, featuring several large, multi-story brick buildings with white window frames. The campus is surrounded by green trees and a clear sky. A prominent brick building with a tall chimney is visible on the left side. The entire image is overlaid with a semi-transparent blue filter.

Significance of the Millennial Campus Designation

NC STATE CENTENNIAL CAMPUS





UNCG is one of North Carolina's most diverse educational institutions. Its research activities, including over \$36.5 M in external awards for FY '17-'18, bring economic benefits to the City and the greater Triad region.

An aerial photograph of a university campus, likely UNC-Chapel Hill, showing a central walkway leading through green lawns and brick buildings. The image is overlaid with a semi-transparent blue filter.

The creation of a *Millennial Campus* is an exciting opportunity for UNCG to:

Grow its research capacity

Forge new partnerships with private partners

Build a dynamic **innovation ecosystem**

Strengthen connections between campus and community

An aerial photograph of the University of North Carolina at Greensboro (UNCG) campus, showing several large, multi-story brick buildings with white window frames. The campus is surrounded by green trees and a clear sky. A tall brick chimney is visible on the left side of the image. The entire image is overlaid with a semi-transparent blue filter.

UNCG's Vision for the Millennial Campus

*“The UNC Greensboro Millennial Campus initiative will fuel **strategic partnerships and community collaborations** to create unique, meaningful academic experiences for our students; **inspire new research and creative endeavors**; and drive innovation, economic growth, and cultural enrichment, **transforming our University and our region.**”*



UNCG Millennial Campus Districts

Two districts on our campus, but integrated into the fabric of our community. Areas where we can partner with the private sector to create new academic experiences, fuel economic development for our region, and create jobs.

Health & Wellness

(Primarily along Gate City Blvd.)

Leveraging existing resources like the Kaplan Center to create an **ecosystem of services and research activities** designed to help foster healthy living.

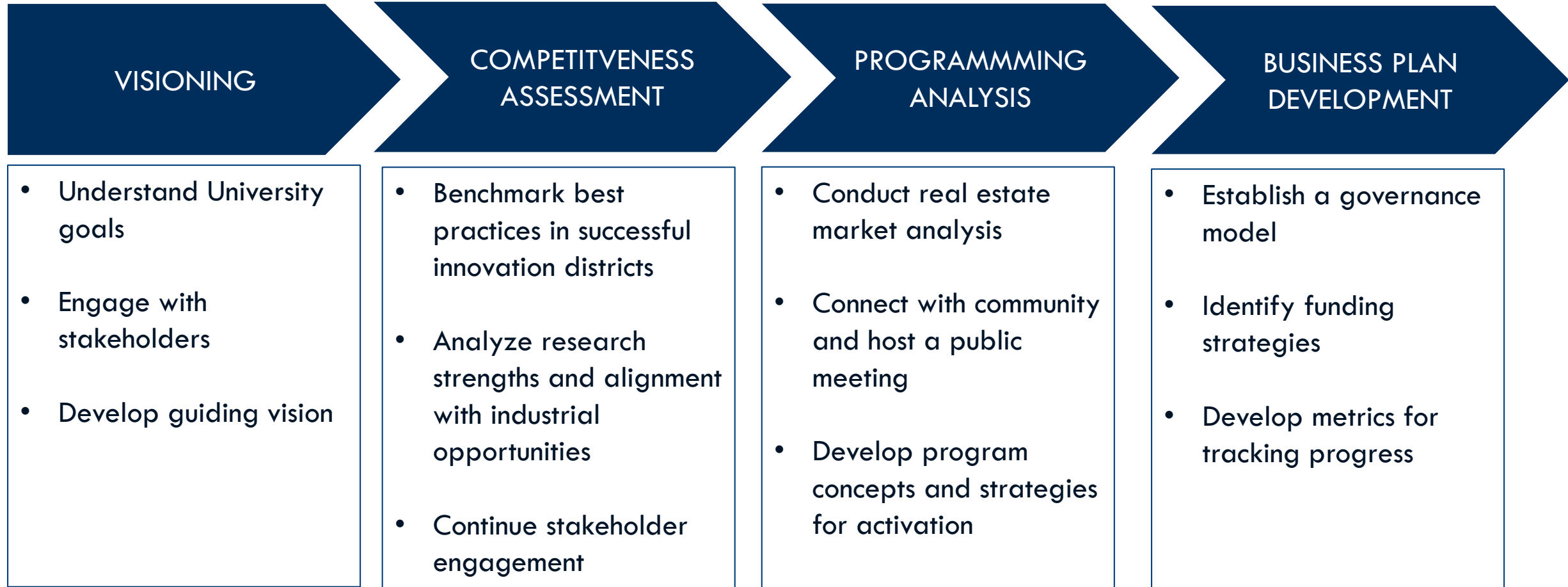
Visual & Performing Arts

(Along Tate St.)

Building from the core of UNCG Auditorium, the Weatherspoon, Taylor Theatre and our **unique local area businesses**.



Overview of Millennial Campus Planning Process:



An aerial photograph of a university campus, overlaid with a semi-transparent blue filter. The image shows several large, multi-story brick buildings with white window frames, interspersed with green trees. In the background, a tall brick smokestack and other campus structures are visible against a clear sky. The text 'Table Discussions' is positioned on the left side of the image.

Table Discussions

PRIMARY TOPICS FOR DISCUSSION



**Overall
Vision**

Partnerships

**Health &
Wellness**

**Visual &
Performing
Arts**

Mix of Uses

STAY IN TOUCH

**Connect
to WiFi**

Network: UNCG-Wireless | No password needed

**Project
Website**

go.uncg.edu/mc-initiative



UNC Greensboro Millennial Campus District Planning

October 18, 2018



UNC
GREENSBORO

HR&A
Analyze. Advise. Act.